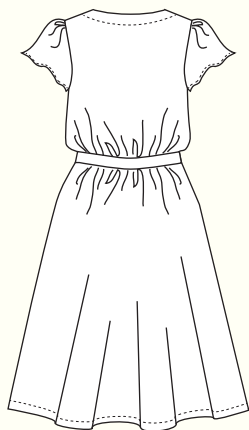


## YALETOWN DRESS &amp; BLOUSE / 2 VIEWS



A - BACK

**DESCRIPTION:** Loose-fitting, unlined wrap-style dress and blouse has a crossover neckline, elastic waistline covered with a fabric tie belt and short flutter sleeves. Optional button & loop closure at the front neckline. View A is a knee length dress with inseam pockets. View B is a hip-length blouse.

**RECOMMENDED FABRICS:** Lightweight woven fabrics such as cotton voile or lawn, rayon challis, silk charmeuse or crepe. Choose a fabric with drape for best results. Allow extra fabric to match plaids, stripes or one-way designs.

**NOTIONS:** Thread.

## BODY MEASUREMENTS (centimetres)

	0	2	4	6	8	10	12	14	16
BUST	76	79	81	84	88	91	95	99	104
WAIST	61	64	66	69	72	76	80	84	89
HIP	91	94	97	99	103	107	110	114	119

## FABRIC REQUIREMENTS (metres)

## VIEW A

115cm	3.9	3.9	3.9	3.9	3.9	4.1	4.1	4.1	4.1
150cm	3.4	3.4	3.4	3.4	3.4	3.7	3.7	3.7	3.7

## VIEW B

115cm	2.5	2.5	2.5	2.5	2.5	2.5	2.5	2.5	2.5
150cm	1.8	1.8	1.8	1.8	1.8	2.0	2.0	2.0	2.0

## FINISHED MEASUREMENTS (centimetres)

	0	2	4	6	8	10	12	14	16
BUST	86	89	91	94	98	102	105	109	114
WAIST	56	58	61	64	67	71	75	79	84
HIP	104	107	109	112	116	119	123	127	132
LENGTH A	105	106	107	107	108	109	109	110	110
LENGTH B	60	60	61	62	62	63	64	64	65

\*\*Waist is elastic and will stretch

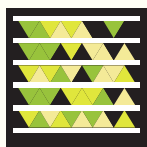
© 2014 Sewaholic Patterns | Made in Canada | Printed on recycled paper



B - BACK

## SNAP ME!

View images of  
the real dress and  
blouse online



Get the free  
mobile app at  
<http://gettag.mobi>